

# The Steadman Clinic Outperforms

## With enterprise-grade storage that's up to the task

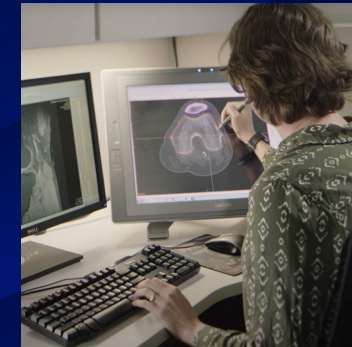
### Steadman overhauls their IT infrastructure

The Steadman Clinic had just gone through a major networking infrastructure overhaul. Their reliance on Cisco paid dividends with the implementation of the networking and converged computing solutions. This overhaul really set them up for an infrastructure that would outperform well beyond their needs.

When it came down to the storage component, they were forced to experiment. They tried several leading storage vendors, but none of them could offer an acceptable level of performance or the right level of interoperability with their key medical imaging platform (PACS). Without a robust enterprise storage solution, no part of their overall IT infrastructure would be able to outperform. It would be anemic at best, and physicians and other users would have their work impeded.

“After trying several different storage solutions, we thought that increasing performance was not an option. Then we installed OpenDrives, and we were literally able to set it and forget it.”

**Ben Boese**  
IT Director, Steadman Clinic



## The Challenge

If you're not familiar with advanced sports medicine clinics, The Steadman Clinic is a leading treatment facility for sports medicine and orthopedic surgery. They are experts at both the diagnostic and treatment phases of sports and orthopedic medicine. Of course, advanced diagnostics these days depends on ultra-fast, ultra-detailed imaging, which is highly resource intensive.

The Steadman Clinic is very forward-leaning, always on the bleeding edge (no pun intended) of implementing the newest and most effective programs, techniques, and tools emerging out of current medical research. To be clear, though, their focus is always first and foremost on the patient's condition, treatment experience, and outcomes.

Overhauling the network was successful, and they were happy with the networking components. Storage, however, was falling flat with little or no performance increases commensurate with their investment in networking capabilities. The Steadman Clinic tried several leading storage vendors, but none of them could offer an acceptable level of performance or the right level of interoperability with their key medical imaging platform (PACS). After those failed attempts with other storage solutions, The Steadman Clinic was losing hope fast. Like a finely tuned athlete, they wanted to outperform, but their infrastructure held them back.

## The Solution

Being introduced to OpenDrives was a matter of a single text message referral encouraging the team to check out OpenDrives. What struck the people at The Steadman Clinic was the positive approach that OpenDrives took toward listening to their needs, assessing the situation, and coming up with the right technical solution with the highest level of customer service. Like the clinic itself, OpenDrives put an emphasis on the customer first. The first step was building on that shared business philosophy.

The Steadman Clinic implemented an OpenDrives Summit storage solution. Summit is our hybrid enterprise solution combining powerful but cost-effective HDD technology combined with flash drive technology. It is the perfect enterprise solution for The Steadman Clinic, as it balances fast throughput for PACS (Picture Archiving and Communication System) and their BioMotion diagnostic lab. As a result, Steadman realizes accelerated performance with a cost-effective price point, reliability, and scalability with consistent and accurate data.

## The Experience

By implementing our hybrid storage solution, Summit, they were able to stabilize the storage infrastructure and also improve transfer speeds and throughput without sacrificing data integrity. Moving their PACS onto the OpenDrives platform was successful, resulting in over 30 TB of images safely residing on the much faster Summit solution. Another objective which was successfully accomplished was migrating their advertising and marketing footage onto OpenDrives as well, much of which was distributed across many different storage disks. OpenDrives truly underpins nearly all of their video-based workflows from diagnostics to marketing.

The collaboration with The Steadman Clinic will not end there. With a growing reliance on high-resolution footage to help in the diagnostic process, their workflow begins to resemble those carried out in a post-production facility for the media and entertainment industry. Those workflows are demanding from a performance perspective, but with OpenDrives ready and willing to advise, consult, and then implement the right solution, The Steadman Clinic will continue its evolution as a premier hightech medical facility.

And just like the elite athletes they work with and put back into the highest levels of activity and competition, The Steadman Clinic can now enjoy being far out front, outperforming on a championship scale.

